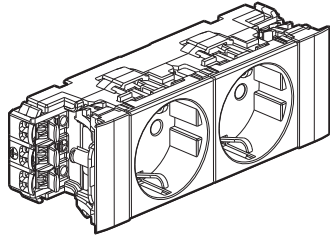
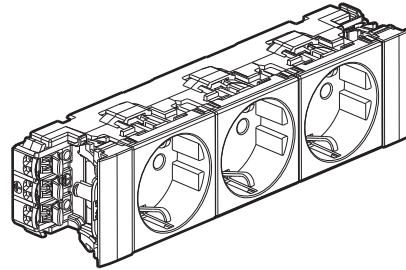


Mosaic™
Sockets for installation on DLP trunking
with direct connection - German standard

Cat. No(s): 0 772 02/03/22/23/32/32L/33/33L/42/43



0 772 02



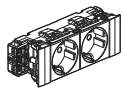
0 772 03

1. DESCRIPTION

Sockets with connection at both sides for snap-on mounting on trunking. These sockets incorporate the Soluclip accessory to hold the socket in place and comply with standard EN 50085-2-1 (the IP 40 rating should not be affected by the cut-out in the cover).

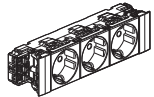
2. RANGE

2 x 2P+E socket outlets - 4 modules



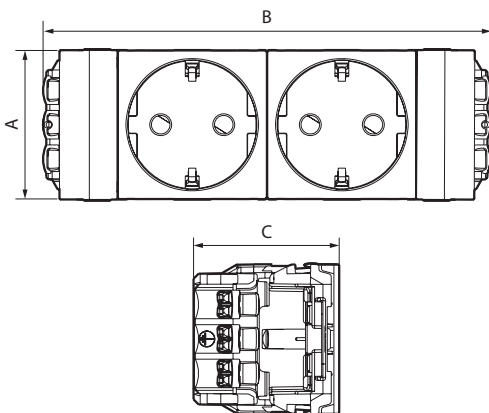
○ White	0 772 02
● Red tamperproof	0 772 22
● Black	0 772 32
● Black Matt	0 772 32L
● Red	0 772 42

3 x 2P+E socket outlets - 6 modules



○ White	0 772 03
● Red tamperproof	0 772 23
● Black	0 772 33
● Black Matt	0 772 33L
● Red	0 772 43

3. OVERALL DIMENSIONS (mm)



Catalogue numbers	A	B	C
0 772 02/22/32/32L/42	45	135	44
0 772 03/23/33/33L/43	45	180	44

4. CONNECTION

Type of terminals: automatic
 Number of terminals: 6
 Terminal capacity: 2 x 2.5 mm²
 Stripping length: 10 mm

5. TECHNICAL CHARACTERISTICS

■ **5.1 Mechanical characteristics**

Impact tests: IK 04
 Protection against solid bodies and liquids: IP 40

■ **5.2 Material characteristics**

Base: ABS
 Cover plate: PC
 Halogen-free
 UV-resistant

Self-extinguishing:

850°C/30 s for insulating parts holding live parts in place
 650°C/30 s for other parts made of insulating materials.

■ **5.3 Electrical characteristics**

Voltage: 250 V~
 Current: 16 A

■ **5.4 Climate characteristics**

Storage and use temperature: -15°C to +70°C

6. MAINTENANCE


Surface cleaning with a cloth.
 Do not use: acetone, tar remover, trichloroethylene.

Caution: Always test before using other special cleaning products.


Sockets for installation on DLP trunking with direct connection - German standard

7. ACCESSORIES


Tamperproof insert

	● Red Fixes directly onto the 2P+E plug of the appliance to be connected to the tamperproof socket.	0 502 99
---	--	----------

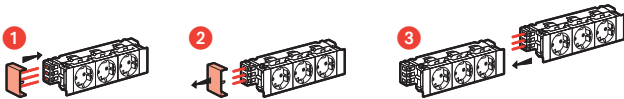
Cable end fitting

	Prevents tension on the connection between the wire and socket if the cable is pulled.	0 898 07
---	--	----------

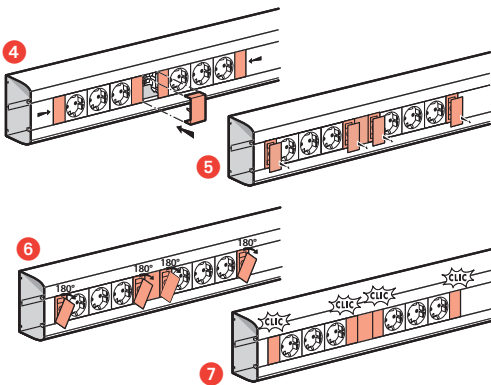
Quick tap-off accessory

	For quick, simple tap-off between 2 socket blocks for trunking. Fitted with a white cover.	0 771 06
---	---	----------

■ Operating principle for the tap-off accessory



Simple, intuitive tap-off from 2 socket blocks.
The tap-off accessory also acts as a finishing piece for the 2 socket blocks.



8. STANDARDS AND APPROVALS

Compliance with standards of installation and manufacturing.
Refer to e-catalogue.